



European Strategy Forum
on Research Infrastructures

Long-term sustainability of RIs

Accelerate and ERIC-FORUM projects

25th May 2021

Jan Hrušák

ESFRI

RI LTS in a broader EU context

- European RIs form the **backbone of European competitiveness** in science and innovation, but also economy > **RI LTS – European relevance**
- ESFRI develops **strategic orientations** for research infrastructures in European Research Area > **RI LTS – ESFRI concern**
- The needs for RIs are increasing rapidly with complex questions in **digitalization, environment, medical research or social sciences** > **RI LTS – evolving issues**
- Efficient RIs enable the greatest discoveries in science and technology, attract researchers from around the world and **build bridges between research communities** > **RI LTS – scientific excellence**
- Answer complex questions, need to **store, transfer and analyze large amount of data** thus increasing societal resilience > **RI LTS – societal relevance**



RI LTS in a broader historical context - ESFRI

ESFRI contribution to RI LTS

- Monitors **state of Innovation Union** and provides input to the development of ERA Framework (Council of EU in 2010) RIs as the ultimate ERA success, > **new ERA**
- Prioritizes projects (Council of EU in 2012), ex-ante condition for funding (in several countries) > **Scientific excellence with relevance (synergies HEU, ESIF, national,...)**
- Provides advice **on RI related policies** including e-RIs (CC of EU 2015) > **coherence**
 - Develops policy concepts on RI related matters **LTS of RIs** (CC of EU 2015)
 - 2015 - EC public consultation on long-term and sustainable investments
- Monitors the operational RIs (ESFRI Landmarks) and develops corresponding methodologies including KPIs (CC 2018)



RI LTS in a broader historical context - ESFRI

Competitiveness Council 26 May 2016 - discussion about the ESFRI Roadmap 2016 and LTS issue

“(...)underlines the importance of ensuring long-term sustainability of Research Infrastructures and invites the Commission to prepare together with ESFRI and relevant stakeholders a targeted action plan”

ESFRI set up an ad-hoc expert group and approved its report Published as ESFRI scripta Vol 2. in 2018



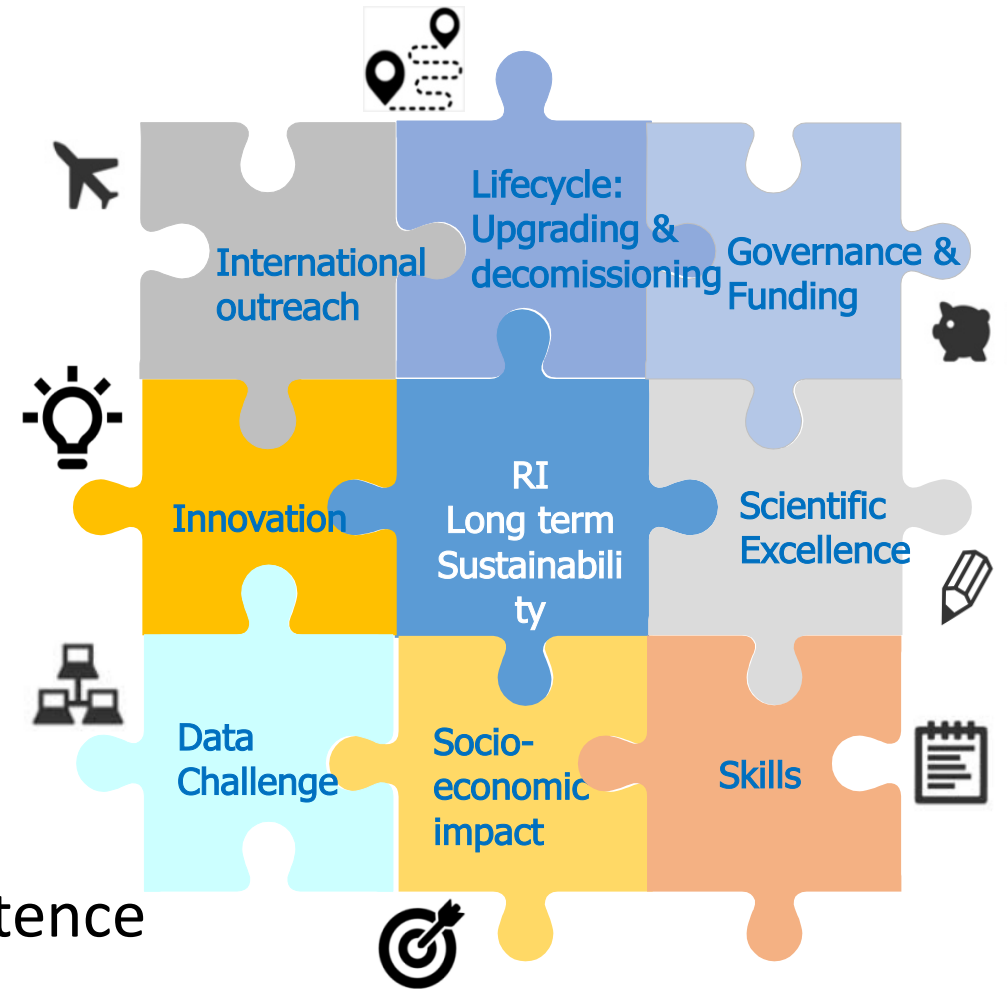
Long-term sustainability of RIs

A robust long-term vision is the essential prerequisite in order to successfully and sustainably operate a RI.

1. Establish and maintain **excellence**
2. Ensuring **the right people are at the right place at the right time**
3. Harmonize and integrate **the operation of RIs and e-Is**
4. Fully exploit **the potential** of RIs as innovation hubs
5. Demonstrating **the economic and wider benefit** to society of RIs
6. Effective **RI governance, long-term funding and effective management**
7. **Coordination** at National and European levels **(and globally)**



- Stakeholder input
- 42 recommendations
- LTS presentation to the RWP
- BG PRES event, 22-23 March
- CC on LTS priority actions,
- ICRI 2018, 12-14 Sept. 2018
- EC COM on ERA (RI chapter)
- EOSC discussion on RI role FAIR (quality) data
- Role of RI and ESFRI in ERA as kernel of competence



ESFRI WHITE PAPER: Long-term sustainability of RIs

Effective RI implementation and sustainability

- **Comprehensive plan right at the beginning of new ERA for RI**
 - financing of different phases of the RI lifecycle
 - Sustainable & predictable funding are key elements
 - adequate and sustainable funding models to address diversity of needs
 - human resources remain a challenge
 - data management as an interoperability tool
 - effective government & management
- ESFRI continues to support initiatives facilitating the combination and synergies of national and European funds (H2020/H Europe, structural funds, and other European) funding for RIs



Ecosystem of RIs as element of LTS



- Clustering around well-identified scientific needs and goals
- Beyond clusters - horizontal networking and vertical linkages (**ECOSYSTEM**)
- Multiple perspectives for generating unique and creative solutions (COVID-19, SDGs, ...)
- Global competitiveness of European research through international collaboration (RIs role)
- Diffusion of scientific knowledge & access broader range of trustable data (quality element to FAIR)
- Cost saving
- Sharing of good practices ...

Thank you for listening

hrusak@kav.cas.cz

<http://www.esfri.eu>