

Long-term sustainability of Research Infrastructures

Where are we now?

Dominik Sobczak

Deputy Head of Unit, DG R&I

**Planning for sustainability of RIs,
25 May 2021**

**#ResearchImpactEU
#EUResearchArea**



What is at stake?

- Construction and operation of **pan-European Research Infrastructures** (37 ESFRI Landmarks - investments close to EUR 20 bln, operational budget of over EUR 1.5 bln/year + 18 ESFRI Projects – investment of EUR 3 bln) + 2 ERICs
- Sustainability of **national landscapes** – major investments from national and EU sources



- Need for a **holistic approach** to the lifecycle of Research Infrastructures, across all their activities
- **Developed together** with national governments and RIs themselves

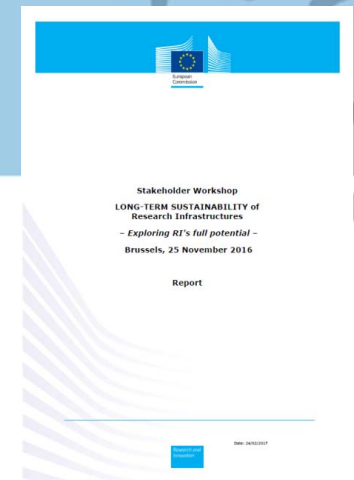
A long story...

- Informal Competitiveness Council of July 2014 **highlighted the importance** of long-term sustainability of RIs
- **Stakeholder consultation on LTS** (Dec 2015): results presented during ESFRI Roadmap launch event (March 2016)
- Conclusions of the **Competitiveness Council of 26 May 2016**: "...**UNDERLINES** the importance of ensuring long-term sustainability of Research Infrastructures and **INVITES the Commission to prepare together with ESFRI and relevant stakeholders a targeted action plan.** "

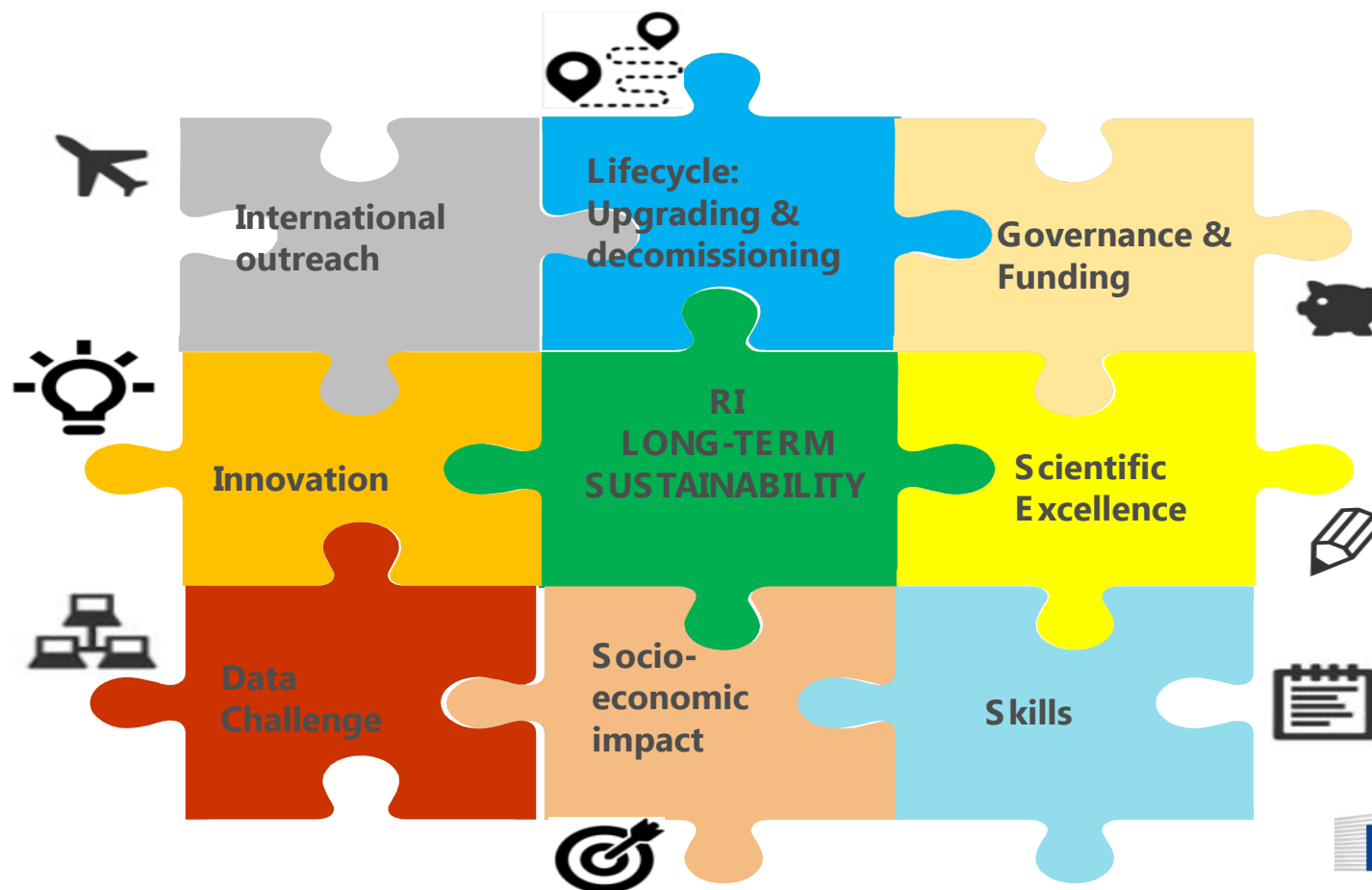


Towards an Action Plan

- **Stakeholders' workshop** (Nov 2016): report published in March 2017
- **ESFRI working group** and publication of **ESFRI Scripta Vol. 2** „Long-term sustainability of Research Infrastructures” (Oct. 2017)
- **OECD expert group on sustainability** (April 2015): report published in Oct 2017
- Publication of the **Staff Working Document** „Sustainable European Research Infrastructures – A Call for Action” (Sep. 2017)




The LTS puzzle



Key elements of the Action Plan - Implementation

-  ***Ensuring excellence of the services provided by the RIs:***
 - Guidelines for scientific & technical reviewing processes
 - ✓ **ESFRI monitoring approach + implementation framework**
-  ***Ensuring that RIs have the right people in the right place at the right time:***
 - European curricula for RI managers, fostering a job market for managers and operators
 - ✓ **Rltrain project (two rounds) – established Master's programme in RI management, mobility and exchange programme**

Key elements of the Action Plan - Implementation

- 
- Exploiting better the data generated by RIs:***
Reinforcing data management policy; federating e-services integrated in the EOSC
- ✓ **EOSC cluster projects (EUR 95 million)**
 - ✓ **Engagement of ESFRI and RIs in EOSC development**

- 
- Exploiting the potential of RIs as innovation hubs:**
Supporting the development of ecosystems around RI, facilitating the involvement with industry (co-creation, users)
- ✓ **INFRAINNOV calls 2017-2020 (EUR 95 million)**

Key elements of the Action Plan - Implementation



Establishing adequate framework conditions for effective governance and sustainable long-term funding of RI:

Synchronising national roadmaps

- ✓ **Significant effort at national level – ERA Progress reports**

Supporting newly established ESFRI and ERICs

- ✓ **Dedicated EU funding 2016 – 2020 (EUR 104 million)**

Increasing visibility of the services offered by pan-European RI

- ✓ **Catalogue of RI services developed**

Establishing guidelines on decommissioning

- ✓ **ESFRI Roadmap methodology – planning and cost calculation**

Facilitating RI access to EU funds, encouraging new sources of funding including private funding

- ✓ **Promoting the use of ESIF, EIB loans, RRF programmes**

Key elements of the Action Plan - Implementation



Assessing the economic and wider societal value of RI:

Developing a standardised model to identify the socio-economic impact of RIs

- ✓ **RI-PATHS - framework describing the socio-economic impact of research infrastructures + practical toolkit**



Strengthening the international dimension of pan-European RI

Facilitating the international outreach of pan European RI

- ✓ **EU-funding for international landscaping (RISCAPE) and increasing visibility of European RIs (RI-VIS)**
- ✓ **GRI framework of GSO – promotion of European RIs**

Essential questions

➤ **Have we made the European RIs more sustainable?**

➤ **What are the main challenges remaining?**

➤ **How can we effectively address them?**

...

➤ **How to get answers to these questions?**

- Report of the EC Expert Group
- RIs – assessing effects of specific EU support (LTS, EOSC Clusters)
- ESFRI – RI performance monitoring framework



Thank You!